

BREAS



SLEEP WELL TONIGHT

DATA VIEWER

FOR WINDOWS PC

INSTALLATION AND SET-UP

Welcome to Data Viewer from Breas Medical. Data Viewer is compatible with both the Z1[®] and Z2[™] CPAP devices.

Please use the following steps to get started.

1

MICROSOFT.NET FRAMEWORK 4.5

Check to see that your PC has Microsoft.NET Framework 4.5.

If it does not you will need to use this link and follow the installation instructions:

<http://www.microsoft.com/en-us/download/details.aspx?id=30653>

2

INSTALLING DATA VIEWER

If the previous version is already installed, please uninstall it before installing new version.

You are now ready to go to the link below and download Data Viewer for Z1 and Z2.

<http://shop.breas.com/documents-and-downloads/>

Open the link and choose Run, followed by Next, Install and Finish.

You are now ready to use Data Viewer for PC.

3

SYNCING WITH YOUR Z1[®] or Z2[™]

With your Z1 or Z2 powered-up in standby mode and Data Viewer open, use the included USB to Micro USB cable, and connect your Z1 or Z2 to the USB port on your PC. At the top of the screen look for and choose the option "SYNC with DEVICE".

Perform the sync function each time you have new data. The Z1 and Z2 will store up to 180 nights at 8 hours per night.

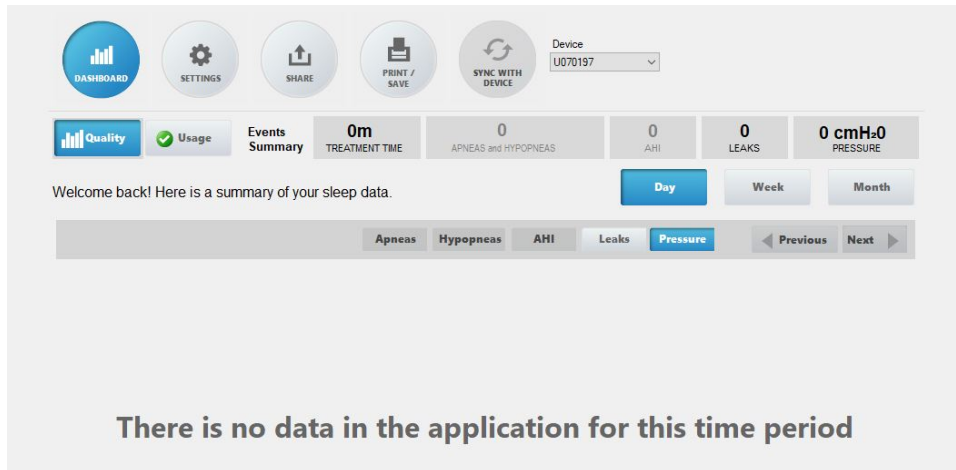
USING YOUR DATA VIEWER FOR PC

Data Viewer provides you with usage and quality information. Usage is represented in hours per session (night) and quality of sleep is measured by the number/duration of air leaks, pressure, Apnea, Hypopnea, AHI index during sleep. If your provider requires CPAP compliance information for reimbursement, this is available on the usage screen.

The following screen shots will guide you through the information obtainable from this version of Data Viewer. Please note that some of the tab functions such as Apneas, Hypopneas and AHI are functional for APAP device only.

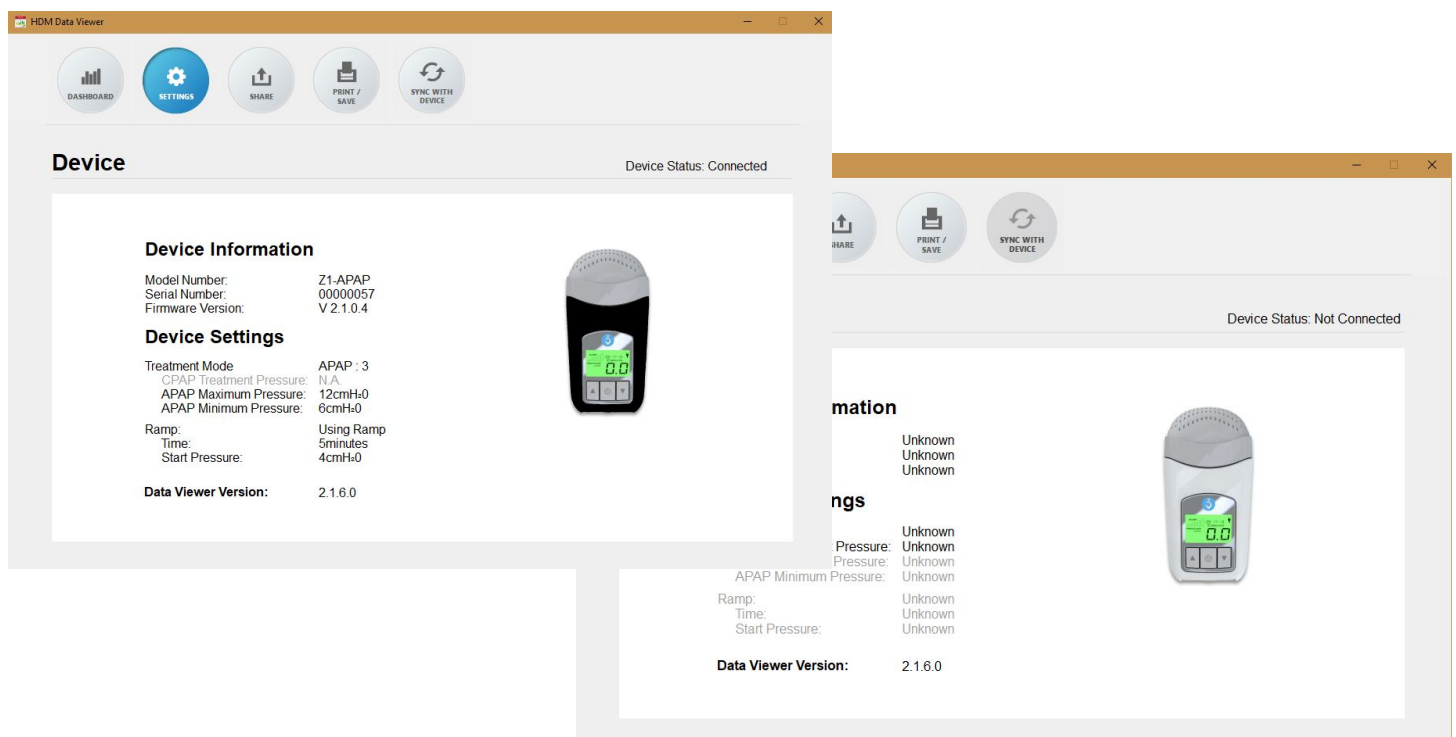
DASHBOARD

The dashboard selection gives you the main screen for data viewing choices. From here you will choose “Quality” or “Usage”, after which you will click on the calendar to pick a month view of Usage or a Day, Week, or Month view of Quality (number and duration of leaks during therapy).



SETTINGS

With your Z1 or Z2 connected to a PC, the settings selection will give you your CPAP device information as seen below. Data Viewer version is displayed. The serial number appears also at the right in the top menu.



SHARE

The share selection allows you to share your data with an individual (physician or provider) that also has Data Viewer loaded on their PC. Simply choose “share my data”. To view shared data, choose “View Shared Data”, and select the data file.

HDM Data Viewer

DASHBOARD SETTINGS **SHARE** PRINT / SAVE SYNC WITH DEVICE Device: 00000057

Share Your Data View Shared Data

1 Select the start date of the data you'd like to share:

januari 2018

m	t	o	t	f	l	s
1	2	3	4	5	6	7
8	9	10	11	12	13	14
15	16	17	18	19	20	21
22	23	24	25	26	27	28
29	30	31	1	2	3	4

Please note that the calendar will only show dates for which there is data.

2 Select the end date of the data you'd like to share:

juni 2018

m	t	o	t	f	l	s
28	29	30	31	1	2	3
4	5	6	7	8	9	10
11	12					

Please note that the calendar will only show dates for which there is data.

3 Which data would you like to share?

☐ Compliance Data

☒ Compliance + Event Data

☒ Open folder where file is saved after saving it

Share my data Create Report

To create a report as a .pdf file, choose “Create Report”. You can personalize your report (Name, date of birth...)

HDM Data Viewer

DASHBOARD SETTINGS **SHARE** PRINT / SAVE SYNC WITH DEVICE Device: 00000057

Share Your Data View Shared Data

1 Select the start date of the data you'd like to share:

januari 2018

m	t	o	t	f	l	s
1	2	3	4	5	6	7
8	9	10	11	12	13	14
15	16	17	18	19	20	21
22	23	24	25	26	27	28
29	30	31	1	2	3	4

Please note that the calendar will only show dates for which there is data.

Create Report

Name: _____ First Name: _____

Date Of Birth:

ID: _____

Compliance Requirements (OPTIONAL)

min hours per night for compliance: min % of nights with compliance:

OK Cancel

Which data would you like to share?

☐ Compliance Data

☒ Compliance + Event Data

☒ Open folder where file is saved after saving it

Share my data Create Report

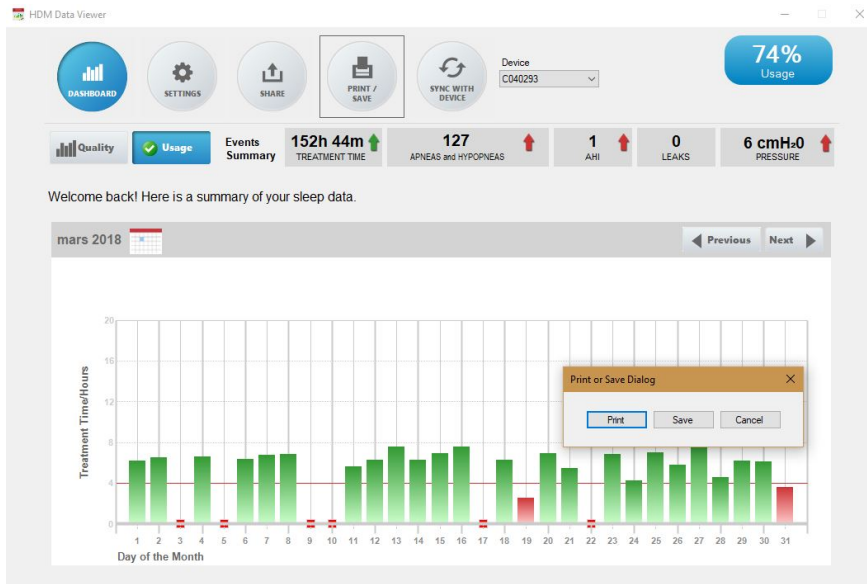
COMPLIANCE REPORT DATA VIEWER

Patient Information	
Name: Sepehr	First name: Ugo
Date of birth: 2003-01-08	ID: 121212
USAGE - Compliance Requirements	
Usage period: 2016-08-01 - 2017-01-14	
min hours per night for compliance: 4.0	min % of nights with compliance: 20
Total nights for the usage period: 166	
Usage nights: 117	
% of nights device used: 70	
Usage nights with compliance: 105	
% of nights with compliance: 63	
Quality Data	
Pressure: 5.08 cmH ₂ O	
Leaks: 7.0	
Apnea and Hypopnea: 1904.0	
Apnea Hypopnea Index (events/h): 2.6	
Treatment Settings	
S/N: Q210440	Mode: Z1-APAP
Min pressure: 4 cmH ₂ O	Max pressure: 10 cmH ₂ O
Ramp time: 35 minutes	Start pressure: 4 cmH ₂ O
ZBreath: 2	
USAGE GRAPH	
PRESSURE GRAPH	

Z1B, Z1 AUTO, Z1Breath, Z1 UNILUGGER, NTLE02B and PowerShare are trademarks of Breas Medical, Inc. US Patent Pending. © Copyright 2016-2017 Breas Medical AB. All rights reserved.

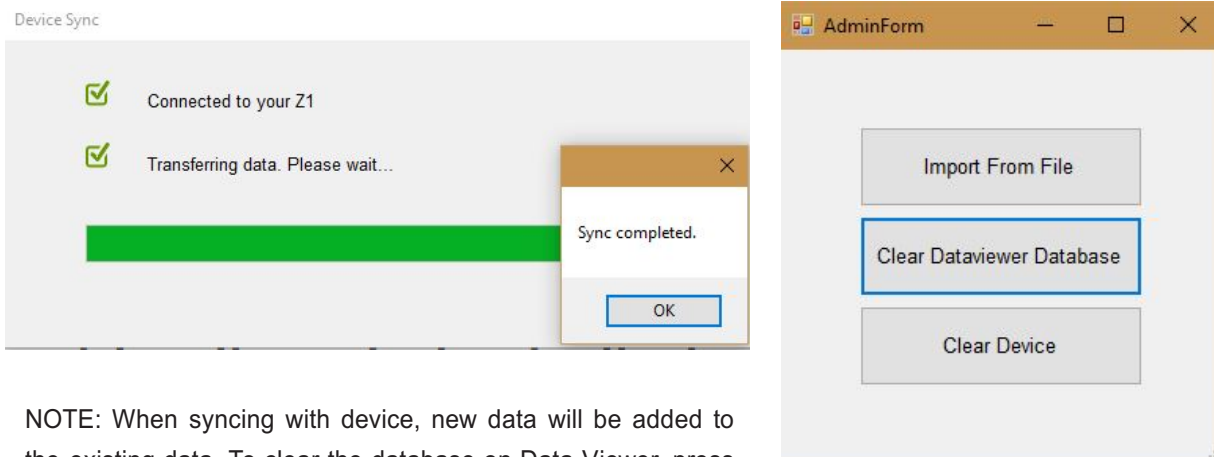
PRINT/SAVE

The print/save selection allows you to print the existing screen or save the screen to your PC as a .png file. You can then email this file to your provider or physician.



SYNC WITH DEVICE

The Sync with Device selection is chosen each time you upload new data. Make sure your Z1 or Z2 is connected to a USB port on your PC with Data Viewer running and a drop box will appear showing the sync progress.



NOTE: When syncing with device, new data will be added to the existing data. To clear the database on Data Viewer, press F10, select "Clear Dataviewer Database".

USAGE DATA SCREEN

Daily usage may be viewed by selecting the desired month on the calendar and proceeding to the day. When you place the cursor on any of the bars a pop-up will give you pressure, numbers of Apneas/Hypopneas, AHI index, and number of leaks and leak duration for that corresponding day. The total usage for the month is displayed in the top right corner, in this case there was 64% usage in Feb 2018. This usage figure is based on Medicare requirements for CPAP compliance set forth in October 2008. If you select the Usage tab, a drop down will appear displaying the 30-day date range that qualified you for CPAP compliance and this information may be saved to file, emailed or printed.



QUALITY DATA SCREEN

Sleep quality is determined by the absence of apneas, hypopneas and air leaks during sleep. You may view your leak history to look for leak patterns by day, week or month. Simply select the desired tab. While it is normal to have some air leaks during sleep it is good practice to limit these in frequency and duration.

Frequent and problematic air leaks can occur in two ways:

1. A poorly fit mask may move as you move while sleeping. Be sure to check that your mask is properly fit and adjusted.
2. Mouth breathing is also a common problem associated with CPAP therapy. If you wake up with a dry and parched mouth or throat, this can be an indicator of excessive mouth breathing. If this is the case, contact your physician or provider for a solution.

